



49, Willow Park, Minsterley, Shrewsbury, SY5 0EH
£800 Per Month



49, Willow Park, Minsterley, Shrewsbury, SY5 0EH

£800 Per Month

VIRTUAL TOUR AVAILABLE - Modern well maintained two bedroom semi detached house in a sought after end of cul de sac position in the village of Minsterley, a short distance to the South West of Shrewsbury.

Available: 18/07/25

Description

Comprising: Entrance hall, cloakroom with WC, kitchen including oven & gas hob, integrated washing machine and fridge, spacious living room with dining area, gas fire and double doors to rear. Stairs to first floor landing with access to boarded loft, bathroom including shower, two double bedrooms including wardrobes. Rear garden including decking and shed, driveway parking for two cars. Gas central heating, double glazing. EPC C



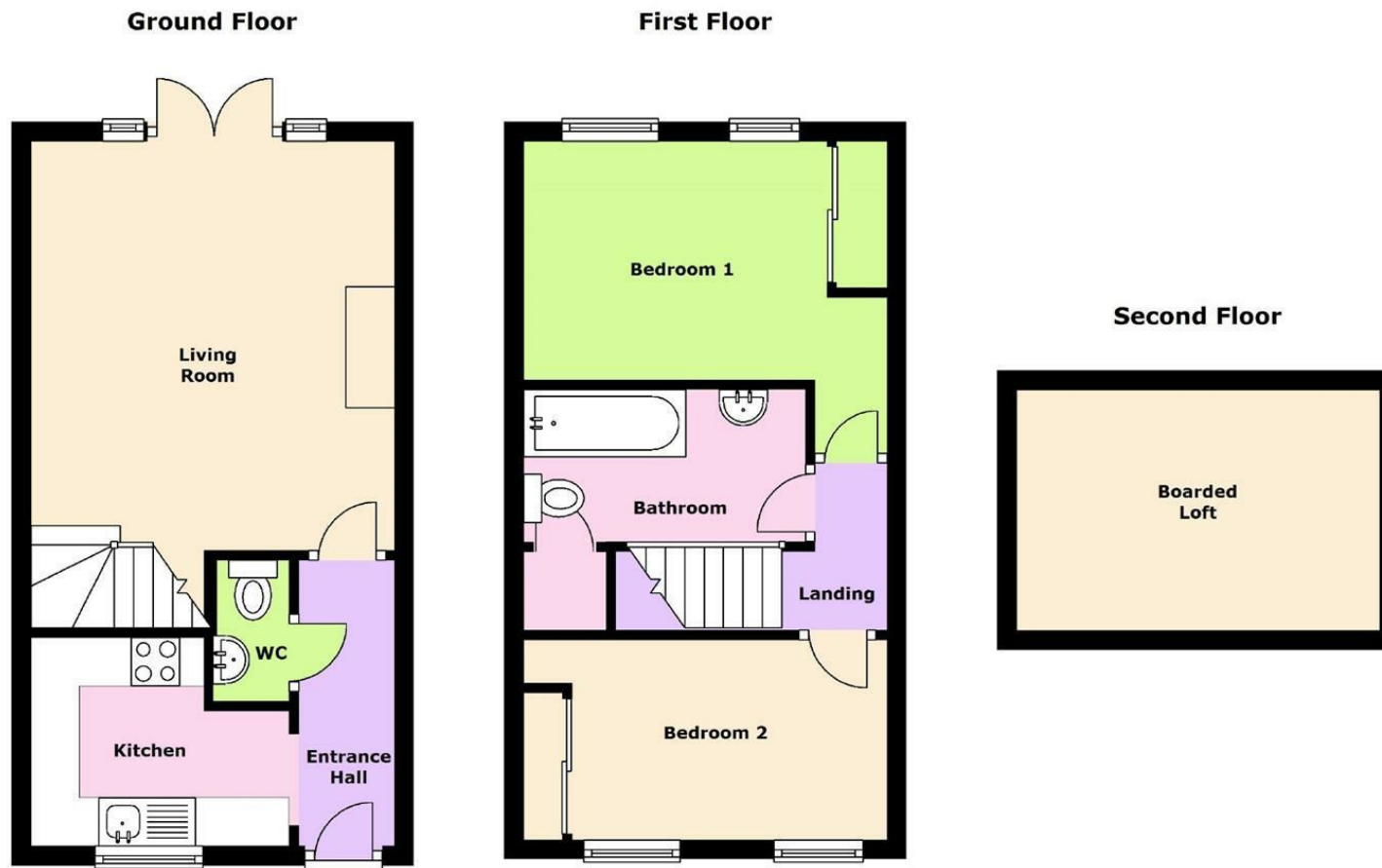
Unfurnished

Council Tax Band: B

Available: 18th July 2025

EPC: C

Floor Plans



We accept no responsibility for any mistake or inaccuracy contained within the floorplan. The floorplan is provided as a guide only and should be taken as an illustration only. The measurements, contents and positioning are approximations only and provided as a guidance tool and not an exact replication of the property.
Plan produced using PlanUp.

These particulars, whilst believed to be accurate are set out as a general outline only for guidance and do not constitute any part of an offer or contract. Intending purchasers should not rely on them as statements of representation of fact, but must satisfy themselves by inspection or otherwise as to their accuracy. No person in this firm's employment has the authority to make or give any representation or warranty in respect of the property.